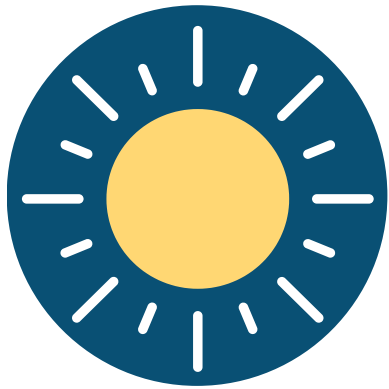


# Adult Saliva Collection Instructions



1. **As soon as you wake up**, get ready to collect your saliva.



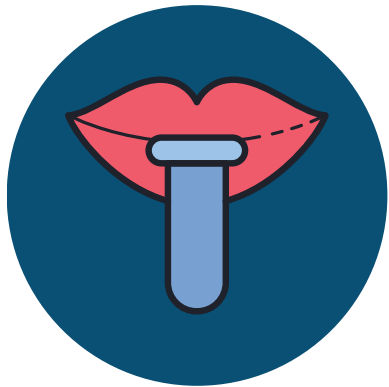
2. Please **do not** smoke, eat, drink, brush your teeth, put on lipstick, lip balm, or lotion.



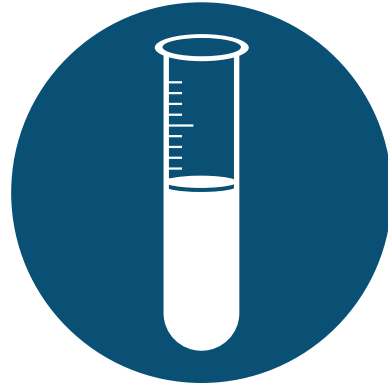
3. Rinse your mouth with water and spit it out.



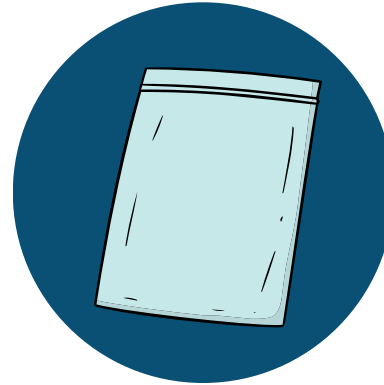
4. Put on the gloves and unscrew the orange-capped tube that is in the "Adult Saliva" bag.



5. Allow saliva to pool in your mouth; gently push saliva into tube.



6. Fill past the **3 mL** line with saliva (not including bubbles).

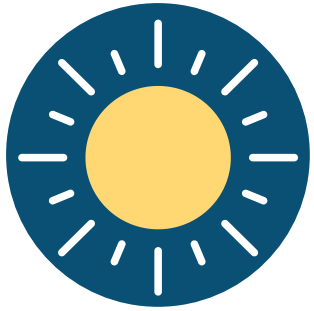


7. Screw the cap back on the tube and place the tube in its plastic bag.



8. Store the sample in a cool, dry place until you are ready to mail.

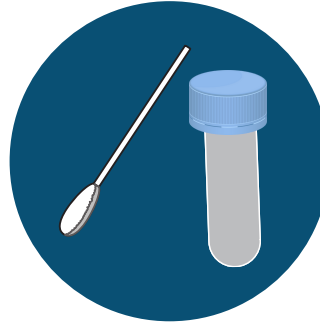
# Child Saliva Collection Instructions



1. As soon as your **baby wakes up**, get ready to collect their saliva.



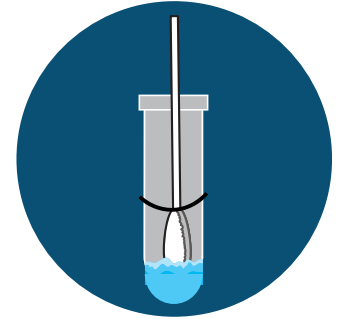
2. Make sure your child has **not** eaten before collection



3. Open the *SafeCollect* package with the cotton swab and tube with your gloves on, and unscrew the tube.



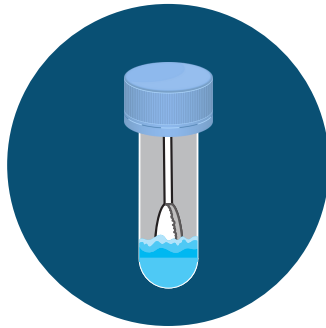
4. Put the cotton swab in your child's mouth for about a minute until it is very wet.



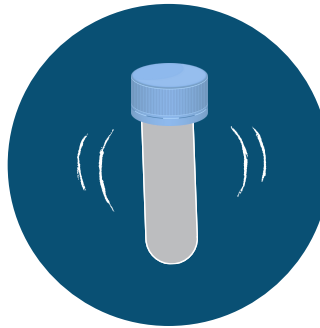
5. Remove the swab and insert it into the tube until the seal inside is broken and the swab is interacting with the liquid inside.



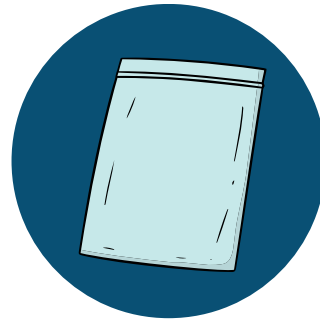
6. Break the swab at the breaking point (small indent on the handle) and throw this end away.



7. Screw the cap back on, ensuring that the swab remains inside



8. Shake the tube 5 times.



9. Place the tube in the same plastic bag as your saliva sample.



10. Store the sample in a cool, dry place until you are ready to mail.